

# Color Selection Guide



**COATED METALS GROUP™**

**ULTRA-CLAD™ is also ULTRA-Cool®**

Cool coatings with premium heat-reflective technology from PPG

KYNAR 500® or  
HYLAR 5000®  
PRE-FINISHED STEEL  
FLAT SHEETS AND COIL



\*Matte Black



\*Charcoal



\*Slate Gray



Galvalume



\*Hartford Green



Burnished Slate



\*Ash Gray



Stone White



\*Classic Green



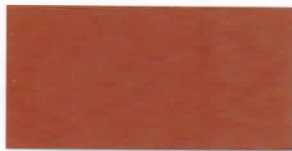
Hemlock Green



Teal



\*Bone White



\*Terra Cotta



Regal Red



\*Slate Blue



\*Almond



\*Colonial Red



Burgundy



Royal Blue



Sandstone



\*Mansard Brown



\*Dark Bronze



\*Medium Bronze



\*Sierra Tan



Champagne



Silver



Aged Copper



\*Copper Penny

\* Also available in 26 gauge SMP

# STOCK AVAILABILITY MATRIX

Color Name	ULTRA-COOL RATINGS			24 GA. STEEL		26 GA. STEEL		28 GA. STEEL
	REFLECTIVITY	EMISSIONIVITY	SRI	40"	48"	40"	48"	42"
Aged Copper	26.8%	0.85	26		•			
Almond	61.4%	0.83	72		•		•	•
Ash Gray	49.8%	0.85	56		•		•	
Bone White	67.6%	0.84	81		•		•	•
Burgundy	27.1%	0.85	26	•	•			
Burnished Slate	25.1%	0.83	22		•			
Champagne	47.2%	0.80	51		•			
Charcoal Gray	25.3%	0.84	23	•	•	•	•	•
Classic Green	30.5%	0.85	30	•	•	•	•	•
Colonial Red	33.2%	0.86	35	•	•	•	•	•
Copper Penny	43.9%	0.84	55	•	•		•	•
Dark Bronze	27.7%	0.85	27	•	•		•	•
Hartford Green	27.1%	0.83	26	•	•	•	•	•
Hemlock Green	31.1%	0.85	31	•	•			•
Mansard Brown	26.0%	0.85	25	•	•	•	•	•
Matte Black	26.8%	0.84	25		•		•	
Medium Bronze	30.9%	0.86	31	•	•	•	•	•
Regal Red	38.5%	0.85	41		•			
Royal Blue	26.8%	0.85	26	•	•			
Sandstone	59.7%	0.82	69		•			
Sierra Tan	45.8%	0.83	50	•	•		•	•
Silver	55.6%	0.81	63	•	•			
Slate Blue	32.8%	0.84	33	•	•		•	•
Slate Gray	37.5%	0.82	38	•	•	•	•	•
Stone White	65.6%	0.82	77		•			
Teal	27.9%	0.85	27	•	•			
Terra Cotta	41.9%	0.83	45		•		•	
Western Rust	24.0%	0.87	23		•			

Oil canning is an inherent part of light gauge cold formed metal products and is not cause for coil, sheet or panel rejection. Protective film must be removed immediately after installation. Colors and sizes can change without notice. Additional sizes may be available, please contact your sales representative. Please contact our office for maintenance and cleaning procedures.

## Product Description

ULTRA-CLAD™ pre-finished metal features PPG's Duranar® ULTRA-Cool® full strength Kynar 500®/Hylar 5000® paint finishes. This high performance product provides the ultimate in resistance against fading and weathering. In addition to our standard colors, custom colors are also available.

2525 West Barbary Place, Denver, CO 80204  
 Phone: 303-623-5333 Fax: 303-623-3738  
 Toll-Free: 877-623-5333

455 Rawles Court, Indianapolis, IN 46229  
 Phone: 317-890-1999 Fax: 317-890-0950  
 Toll Free: 866-694-1999

300 Yard Drive, Verona, WI 53593  
 Phone: 608-826-0356 Fax: 608-826-4264  
 Toll-Free: 800-784-0356

## Color Samples

Colors shown represent the actual colors as accurate as modern printing technology will permit. Free metal samples are available upon request. Additional custom colors are also available upon request.

KYNAR 500 is a registered trademark of Arkema, Inc.  
 HYLAR 5000 is a registered trademark of Solvay Solexis, Inc.  
 Duranar, ULTRA-Cool and the PPG logo are registered trademarks of PPG Industries.  
 GALVALUME is a registered trademark of BIEC.



PPG Coatings Protected

www.cmgmetals.com